

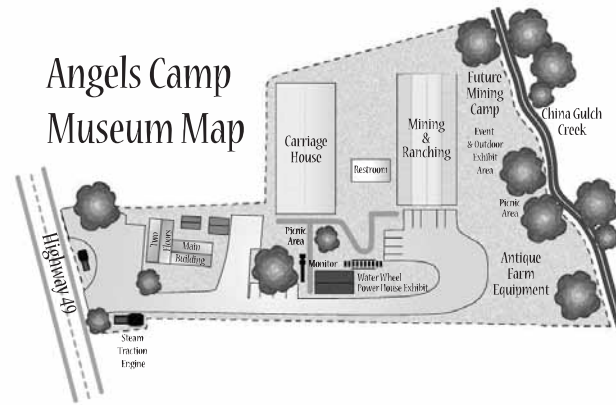


RAILROAD... the first train into Angels Camp arrived on Sept. 15, 1902. As the Jamestown-Angels Camp branch of the Sierra Railroad, it connected with Sonora and Oakdale to San Francisco, serving the mines and timber industry as well as providing passenger service. It was discontinued in 1935 and the tracks were removed in 1940. The old depot is still standing on Depot Road, now a private residence.



OLD CITY JAIL... constructed in the 1860's was first a store owned by Sam Choy, a Chinese Merchant in Chinatown. The city later purchased it and used it as a jail until the law compelled the city to have an attendant with a prisoner, and it was closed.

CHINATOWN... rickety wooden structures and tents were on the twenty lots (located on Bird's Way) that comprised Chinatown. The area was a lively section of town with gambling dens and the Red Light District. The Chinese were fairly self-sufficient and tended a huge community garden, selling the vegetables in town, as well as running their own grocery and laundry businesses. Fire destroyed Chinatown many times and only two stone buildings are left.



ANGELS CAMP MUSEUM... step back in time and experience the pioneer spirit that made Angels Camp such an interesting part of the Mother Lode history. Spread over more than three acres at 753 South Main Street, its buildings house historic treasures that tell the story of life in a gold mining town, including one of the finest collections of carriages, wagons and mining equipment in California. Watch a video of the actual Jumping Frog Jubilee in the Mark Twain Room or pore over the gold rush and hard rock mining artifacts dating back to 1849. You can picnic on the grounds. Call 209 736 2963 for opening hours.



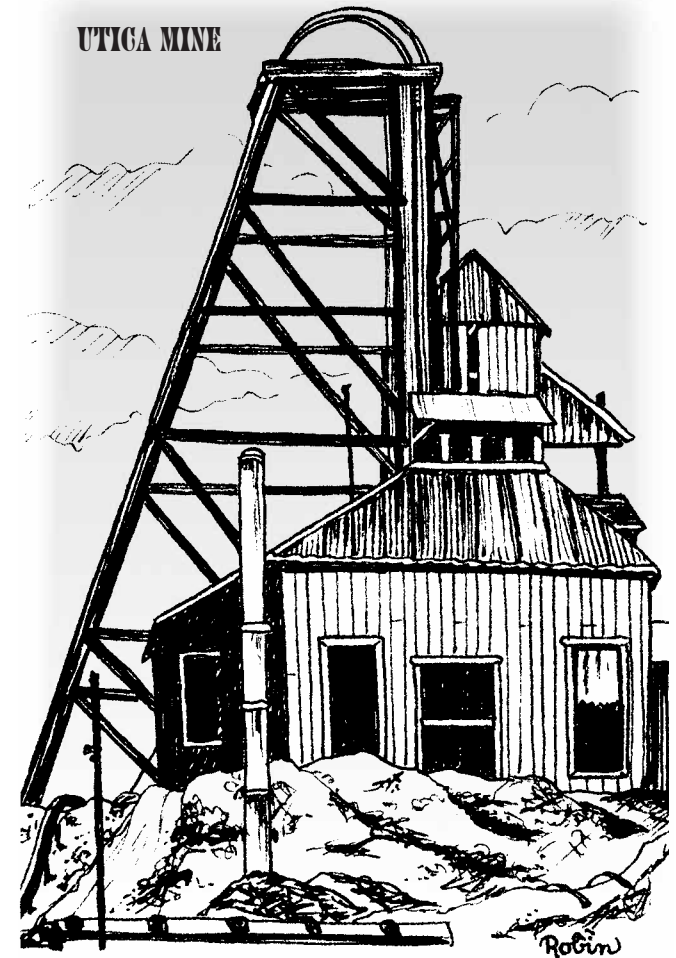
Historic ALTAVILLE Grammar School.

ALTAVILLE SCHOOL... the first school house was built on Main Street in 1857, when 49 students spent terms that ranged from 3 to 6 months. In 1858, the Altaville Grammar School was erected with funds raised by a dance held in the Prince-Garibaldi Building. This brick school house is one of the oldest schools in California and was used until 1950. It is now part of the Angels Camp Museum and is located 1/2-mile north of the Museum on Hwy. 49.

ANGELS CAMP: REDEFINING THE RUSH... the Angels Camp Branding Initiative, launched in October 2008, is a long-range plan to develop Angels Camp as the base camp for mountain sports in the Sierra Nevada Mountains. Mountain sports available in the area include road and mountain biking, hiking/trail running, golfing, camping, horseback trail riding, rock climbing, caving, zip-lining, whitewater rafting, kayaking, fishing and boating of all types, cross-country skiing, alpine skiing, snowmobiling and snowshoeing. The Brand Leadership Team is a group of citizens tasked by the City Council to bring this vision to life. For more information, call 209 736 2224.

HISTORIC ANGELS CAMP

Walking Tour
&
Driving map



Courtesy of Angels Camp Brand Leadership Team
P.O. Box 667 • Angels Camp, CA 95222
209-736-2224 • branding@angelscamp.gov

ANGELS CAMP

Was it Henry or George Angel after whom Angels Camp was named in 1848? Authorities disagree, but odds are with Henry, the town's first store keeper.

In 1972 the annexation of Altaville increased the population of Angels Camp to 2,700 residents and created a Main Street that stretched four miles. This is quite a contrast from 1849 when nearly 4,000 miners camped in the one mile area from Angels Creek to Utica Park.

The cry of "gold" brought the miners but within a few years local areas were worked out of surface gold and Placer Mining had all but ceased. Then, as tradition states, Bennegar Rasberry's muzzle loader jammed. He fired the rifle into the ground where the ramrod split a stone to reveal the glittering gold inside and quartz mining began in Angels Camp.

The main quartz vein extended from southern Altaville to Angels Creek and all along Main Street were the mines: The Sultana, the Angels, the Lightner, the Utica, and the Stickle.

Ore was pushed by hand cars over tracks from the mines to the mills where the "crash" of over 200 stamps was produced each day during the mining peak of the 1880's and 90's. It has been said that when the last stamp mill ceased operating, the town was so quiet that people could not sleep.

The estimated gross recovery of gold from these 5 mines from 1886 until 1910 was \$19,985,747...and Angels Creek ran chalky white from the mill wastes.



FOOT BRIDGE ACROSS ANGELS CREEK... .located northwest of Hubler's Brewery on Main Street, the bridge served as a short cut across the creek to Finnegan Lane and the Grammar School that was built in 1890. The footbridge was restored in 1998 by the Native Daughters of the Golden West, Ruby Parlor #46.

Angels began as a tent town with many flimsy wooden structures and, in 1855, the first fire took its toll by destroying almost everything from Angels Creek to St. Patricks Church.

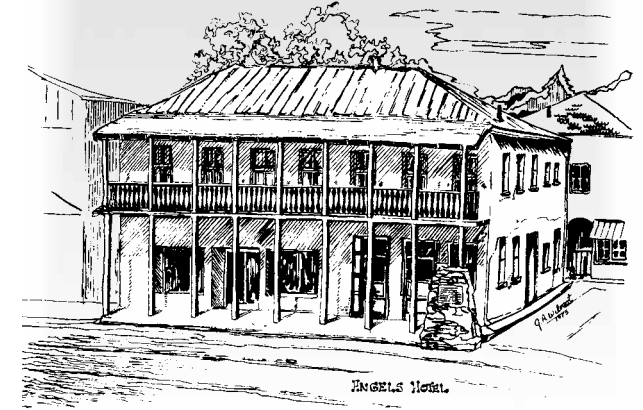
In rebuilding, many structures were built of rock with iron doors and roofs insulated with dirt and sand. Most of these buildings are standing today. The rest were again destroyed and rebuilt with only a handful of the original in evidence.

Mining continued until the last. The Gold Cliff shaft of the Utica Mining Co. closed in circa 1942. With the need for metal during the WWII, most of the mining machinery was sold for scrap and now only a few concrete foundations and mill works remain of the Gold Rush Days in Angels Camp.



CHICKEN LADDER ON HARDCRABBLE STREET... was constructed by home owners residing on the narrow, "nearly vertical" street, to assist in walking up and down the hazardous slope. Many homes have front entrances on one street and back entrances on the next as Angels Camp is built on hills and honey combed with mine tunnels.

UTICA PARK... was built in 1954 on the site of the Utica Mine after the ground had been leveled and shafts filled to the 60 ft. level. Note the ground slippage after numerous cave-ins: the Hwy, on one level, the park on the next. The Park originally held a huge frog pond but water seeped into the tunnels underneath causing both water and frogs to disappear.



MARK TWAIN AND THE JUMPING FROG OF CALAVERAS

As the story goes... "in the fall of 1865, Mark Twain spent time with the Gillis boys in their cabin on Jackass Hill near Angels Camp. He made regular visits to Angels Camp and Calaveras Co. and spent idle hours in the Angels Hotel where the proprietor, Ross Coon, related to him the story of the famed jumping frog contest which had taken place that summer.

Because the miners had little to do in their "off" hours, gambling became a common past-time and frog racing became most popular. Small fortunes were won and lost by the jump of a frog.

Jim Smiley, made famous by Mark Twain, had boasted to own the "best jumper in Calaveras County," and would parade around town with his frog, Daniel Webster, in a basket under his arm.

About this time two slickers from New York had arrived in town and upon hearing Jim's boasting began to make light of his frog, saying "they didn't see he was any different from any other ol' frog that could be caught in the town cistern"...Jim could stand no more and the bet was on.

Jim agreed to catch a frog for the city slickers and left Daniel in their keeping. While he was gone, they went across to Scribner's store, purchased some buck shot and proceeded to fill ol' Daniel full.

Smiley soon returned and the race was on, but because his frog would not budge, the race was called. The Bowery Boys collected their money and headed for parts unknown before it was discovered that Daniel was more than half shot.

Mark Twain's story was printed that same year and Angels Camp became known as the home of the "Celebrated Jumping Frog of Calaveras."

A statue of Mark Twain was donated to Angels Camp in 1945 by a motion picture company making a film, starring Frederick March, on the life of Mark Twain. It is located in Utica Park.

WALKING TOUR

1. Your walking tour begins at the corner of Rasberry and Main along the streets of Angels Camp. Pause for a moment and imagine. Angels is a quiet mountain town now, but at one time the city vibrated to the roar of the stamp mills and danced to the music of many saloons and dance halls. There is some humor in the fact that the former City Hall was the site of the Starceвич Saloon in the 1880's and during Prohibition was a local source for bootleg. Old timers say the whiskey was hot stuff.

2. Circa 1880, site of Crooked Nose Joe's Saloon and Boarding House. Over the years has housed a bocci alley and many restaurants.

3. As you walk on down the street, which looks remarkably the same as it did in the early days, picture it when the Fire Hose hand cart was stored there, circa 1890. Along with alerting the volunteers to a fire, curfew was also rung on this bell.

4. Circus Hill, via stairs to parking lot, circa 1870, was the site of the Stickle Theater and Dolling Hall where it was said that Lola Montez and the Booths performed.

5. Site of the jewelry store of Peter Johnson, circa 1890. In back was the Angels Post Office.

6. A miner appreciated a good smoke as well as a good drink and would have come to Ignatz Suess, the fondly remembered cigar maker to purchase a hand-rolled cigar.

7. Next door, the Calaveras Californian office has been in this location since the newspaper made its first appearance in 1924.

8. Old location of Goodloe-Barden Drugstore and Sweetatorium. In 1900's the Post Office moved here.

9. Gold is money and the citizens of Angels needed a place to put the fruits of their labors. In 1900, the Calaveras County Bank was formed by a group of local businessmen. In 1930, it was taken over by the Bank of Italy, which later became the Bank of America.

10. One of the earliest buildings still standing. It was built in 1856 as a general merchandise company by E. & G. Stickle. Here a woman would have come to purchase yardage or pots and pans.

11 & 12. Circa 1880, site of early day saloons and clothing stores. In 1935 the Post Office moved to 11.

13. Circa 1900. Site of doctor's offices and several stores.

14. Continuing on down Main Street you come to the Brosemer Building which, in 1860, was a dry goods-mercantile. Here a miner might have come for a pair of "Levi's". It was the first store in town to do business on a cash basis. Previous to this, all customers had accounts.

15. Circa 1854, the Odd Fellows Building. The hall is upstairs. Downstairs has been used as a cigar store, saloon and dry goods.

16. Circa 1893, was built by Dolling as an addition to the Angels Hotel. In 1907 the saloon moved in here.

17. As you walk on towards the creek, you approach the heart of Angels of the early days. The Angels Hotel, was built in 1855. It was here in 1865 that Mark Twain reportedly heard the story of Jim Smiley and the jumping frog, a story which has made Angels Camp a familiar name all over the world. The hotel has operated continuously since 1856.

18. As you detour briefly off Main Street down Birds Way, you enter one of the most charming and historic parts of Angels. Here, along Angels Creek, was Chinatown. As you listen to the peaceful sounds of the creek, imagine the sounds of Chinese voices and the rich smells of their restaurants and laundries. On the hill behind Birds Way was the Chinese cemetery where they were temporarily buried. No early day Chinese could 'rest' in a foreign land and relatives saved to send the ashes of their loved ones home. Nothing remains on the site but a hillside badly eroded by later mining operations.

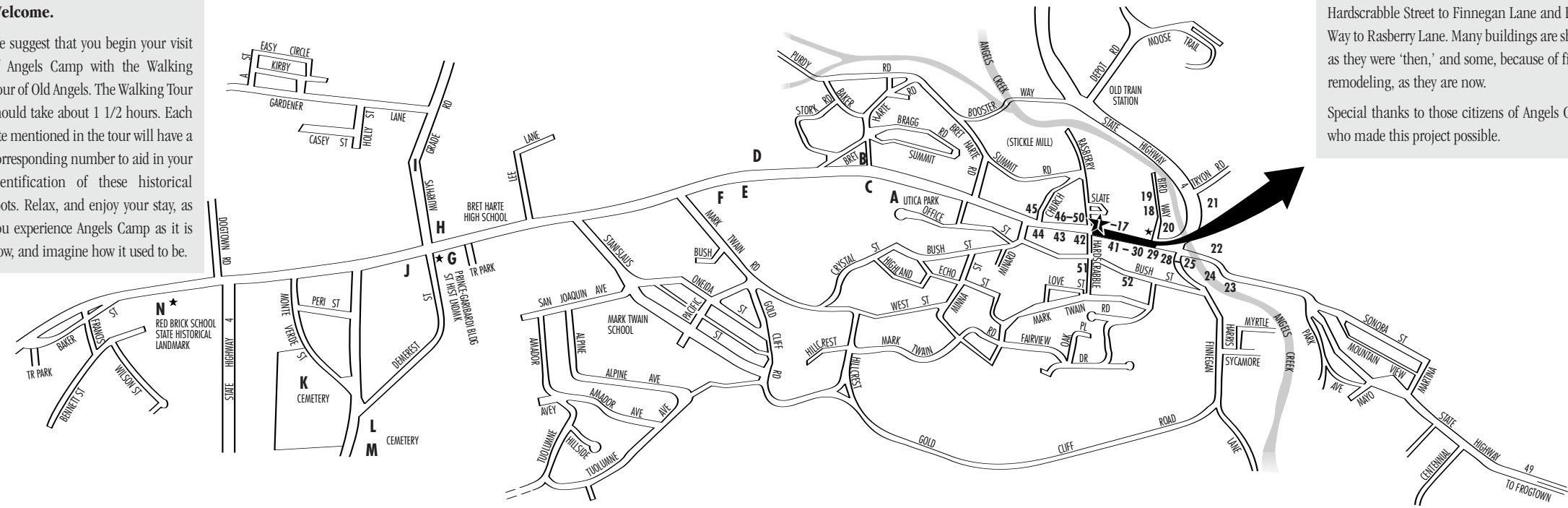
19. Crime was certainly a part of life in a mining town and offenders ended up in the jail. See picture on front.

20. Re-entering Main Street, you pass one of the oldest homes in Angels. It was built by the Peirano/Lemue family in 1860. Directly

HOW TO USE YOUR TOUR

Welcome.

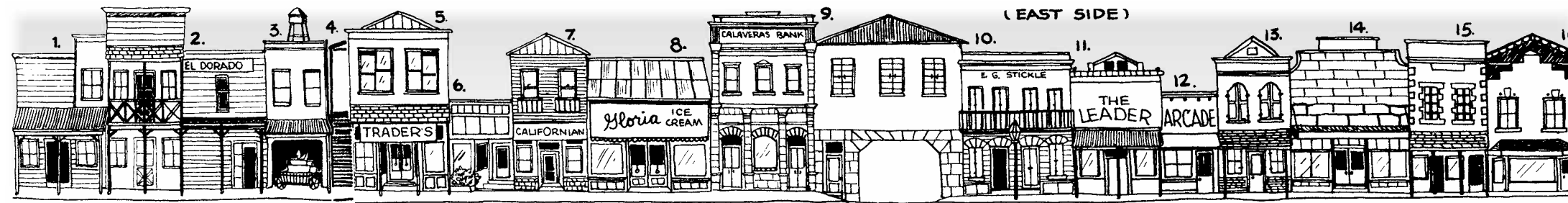
We suggest that you begin your visit of Angels Camp with the Walking Tour of Old Angels. The Walking Tour should take about 1 1/2 hours. Each site mentioned in the tour will have a corresponding number to aid in your identification of these historical spots. Relax, and enjoy your stay, as you experience Angels Camp as it is now, and imagine how it used to be.



MAIN STREET ENLARGEMENT

Shown in the drawing below is Main Street, from Hardscrabble Street to Finnegan Lane and Bird's Way to Rasberry Lane. Many buildings are shown as they were 'then,' and some, because of fire or remodeling, as they are now.

Special thanks to those citizens of Angels Camp who made this project possible.



in front of it was the Peirano store, started in 1850.

21. As you cross Angels Creek and walk east on Hwy 4, you come to the Volunteer Fire Department. The crucial task of fire fighting has always been performed on a volunteer basis here and the department is one of the best in the Mother Lode. A small museum holds Angels Camp's first fire engine.

22. Back on Main Street again, we come to the old Utica Hospital, 4th house on left past bridge. The mines were plagued with numerous accidents and 1894 was a particularly bad year. The Utica Co. erected a hospital which could house 16 patients with Dr. Dorroh in charge.

23. In early days, each small town had its own brewery and the Hubler Brewery and Soda Works provided much pleasure for the City of Angels. Built in the 1880's, there was also a saloon along the road where miners could come and drink beer, perhaps in the shade of the round house (since donated to Utica Park).

24. The footbridge across Angels Creek to Finnegan Lane is one of the most delightful spots in town.

25. As you return on Finnegan Lane you come to the 1848 site of Henry P. Angel's Trading Post. It was here that Angels Camp began.

HISTORIC ANGELS CAMP

In 1849 John Scribner and Capt. Henry Matthews took over. After the 1855 fire they moved up the street and were again burned out and rebuilt. Fortitude and perseverance were requirements for the early residents.

26. Next door to the Trading Post was the site of a blacksmith shop in the 1870's and later a buggy factory. The building was destroyed in the flood of 1909. Even today, long time residents of Angels recall the days when most travel was by horse and buggy.

27. For many years, the Angels Camp City Hall stood here. The century old building, earlier a mortuary and French laundry, was torn down, and replaced by a retail shop.

28. Circa 1870's. Began as site of a livery stable.

29. Now a parking lot, this was once one of the most exciting and active places in Angels. In earliest days the ground floor housed the Scribner-Matthews Store, then the Rasmussen Store and the first Wells Fargo Office. Woods Hall and Opera House were later built on top. The Opera House was on the Chattaqua Circuit and many an enjoyable evening was spent here by the people of Angels. Look across to Birds Way and imagine the Ladies of the Night coming to the performance dressed in all their finery. It is said that the opera boxes were reserved for them. The building was

destroyed by fire in 1941.

30. Circa 1870, site of the Louvre Saloon.

31. Bazinett Hotel building began as the site of the Commercial Hotel, saloon, tailor shop and tin shop. Destroyed by fire and rebuilt to present structure, circa 1931.

32. Began as a saloon, then barber shop, millinery store and finally the Bank of America. The 1898 vault door is still in use.

33. Circa 1890, the City Drug Store, operated by Dr. Dorroh. The first telephone exchange in Angels Camp was located here.

34. Circa 1890. In 1906 the Davy Crockett Saloon, home of the Angels Camp Baseball Team.

35. Circa 1890. Built as Rose's Butcher Shop.

36. Circa 1910. Location of the telephone office, Hymen Bros. store, and post office.

37. Across the alley, the Sierra Club was built in the 1860's as a warehouse for the Stickle Bros. across the street. It later became a saloon and game room.

38. Built as a saloon.

39. The Miners Union Hall occupied this spot.

40. In earliest days, an ice cream parlor and jewelry store. Since occupied by a variety of businesses.

41. Circa 1850. Site of the Central Park Hotel, later the Waverly Stage Stop and then a saloon.

42. Circa 1857. Proceeding north past the corner you arrive at the site of the Revere House. It became the Calaveras Hotel, circa 1870. This well-known hotel was run by the Roller family from 1880-1938, when it was destroyed by fire. This was the largest hotel in Angels, with 50 rooms, which helped ease a severe housing shortage in the peak mining years. Miners were often single men who paid to cram into attics at one point in this quiet little town's history. Located downstairs at the Calaveras Hotel were a butcher shop, Western Union, a saloon, and adjacent to it the nickelodeon, Angels Camp's first 'movie house'.

43. Circa 1850. Up the hill to the Love house, the oldest house in Angels. Built by Alexander Love, the Love livery stable was located in front with a dairy behind.

44. This structure, Circa 1860, once housed a livery stable and later a blacksmith shop.

45. At the top of the hill is the Congregational Church, built in 1904. The life of a missionary, whatever the faith, was not an easy

one in a rowdy mountain town but, surprisingly, Angels was reported to be one of the more "calm and conscientious" communities of the Mother Lode.

46. Coming back down the hill we find the Peirano house, of Greek Revival architecture, which remained in the Peirano family until it was sold out of the estate in 1993.

47. This stone building with iron doors was the Mercantile Store of the Largomasino Brothers. It is reported to be the oldest building in town, having survived all three fires including the last major fire in 1856.

48. Walking past the Lode Hotel you would have heard the sounds of a bocce alley located in the basement. Bocci is an Italian game similar to bowling which was enjoyed by the town's large Italian population. The miners were a very international lot. The first to come were the "Cousin Jacks" or Cornishmen. They were followed by Italians, Chinese, Mexicans, and many from the Balkans.

49. Formerly used by Judge McClory as his court and office.

50. Circa 1900, a popular rooming house for miners. Downstairs was a jewelry store.

51. Chicken Ladder. See drawing on front.

52. Up Bush Street, the Masonic Hall, circa 1850. The men of Angels must have been joiners since between 1854 and 1943 no less than 21 lodges were organized, including Bear Mountain Masonic Lodge No. 76. The wall in front was constructed in 1882 at a cost of \$3.00 per rod (1 rod = 16 ft.), for a total cost of \$38.25.

As you stand in front of the hall and look out over town, realize that, without the cars and the electric signs, the Angels Camp you see today looks much as it did in its heyday. Nestled securely in its heritage, it is a town working to love and preserve its past, while building its future.

DRIVING TOUR

A. Utica Park and the Utica Mansion (big Italianate house south of the park on Office St.). The north shaft of the Utica Mine was located in the park (now cemented over). Charles Lane was one of the developers of the Utica. Another developer was James Fair of Comstock Lode fame.

B. Serbian Church, circa 1910. Second oldest Serbian Church in the United States.

C. Lightner Mine. Several pieces of mine equipment can still be seen at this site.

D. The Angels Camp Museum is well worth a visit. Of particular interest is an outstanding buggy collection.

E. Site of the Sultana Mine, discovered by J. Boon in 1852.

F. Site of the Angels Quartz Mining Co., formerly the Doc Hill Mine, circa 1860.

G. Prince-Garibaldi Bldg., circa 1852. Once a store, and also the site of the Prince Undertaking Parlour. An 1888 advertisement for this establishment reads: "I will give the service of my elegant plumed hearse free of charge with any coffin worth twenty dollars or more at my establishment. All facilities for embalming bodies at hand."

H. Site of the Altaville Hotel, circa 1895.

I. Murphys Toll Road, circa 1860. A toll was collected from all wagons using this road to Murphys.

J. Altaville Foundry, circa 1854, now a shopping center. Began in response to the demand for mine equipment. This foundry supplied much of the mining equipment for the entire Mother Lode. Now the California Electric Steel Company, located on Monte Verda St., has operated continuously since 1854 and makes machinery of all types. A corner of the building still stands on site.

K. Protestant Cemetery, circa 1855.

L. Catholic Cemetery, circa 1855.

M. Serbian Cemetery, circa 1910.

The cemeteries of Angels Camp tell their own story. Walking through the peaceful trees, you can read the epitaphs of the men, women and children who made Angels Camp's history.

N. Altaville School, Circa 1858. (See drawing on front.)

